


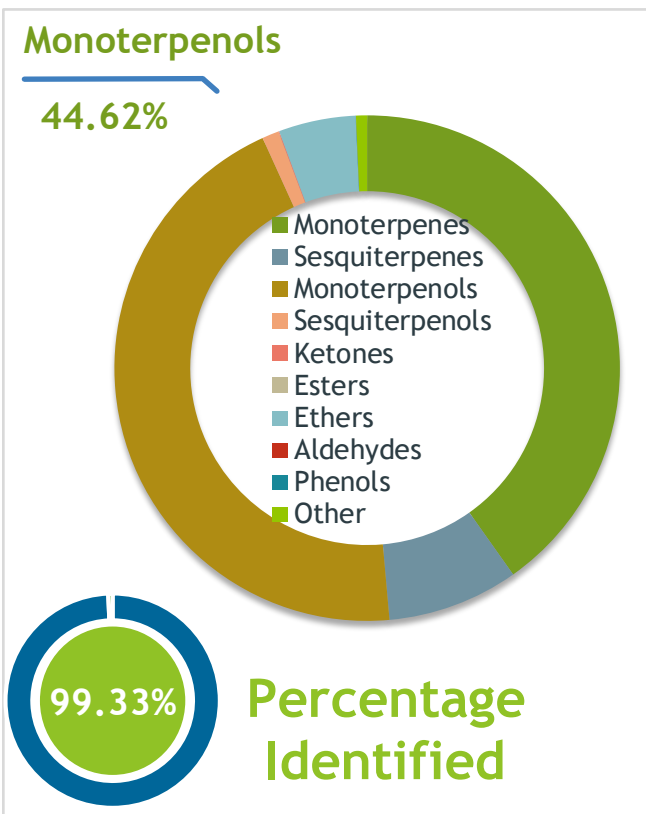
Client

Source 

Tea Tree (*Melaleuca alternifolia*)
 LGEO281205-002 - Australia

Sample

Tea Tree (*Melaleuca alternifolia*)
 Identification #: LGEO281205-002
 Type:..... Essential Oil
 CAS Number:... 68647-73-4



Properties

Country Of Origin | Australia
 Specific Gravity | NT
 Refractive Index | NT

Primary

40.35% | Terpinen-4-ol
18.50% | gamma-Terpinene
9.68% | alpha-Terpinene

Result

APPROVED

12/2/2023

Conclusion

No adulterants, diluents, or contaminants were detected via this method. This oil meets the expected profile for genuine Essential Oil of Tea Tree (*Melaleuca alternifolia*)

Internal Number: | EVS-5956



Essential Validation Services

747 SW 2nd Ave IMB 12 Suite 306
 Gainesville, FL 32601
 317.361.5044 |
<https://essentialvalidationservices.com/>

Alan Christen

Monoterpenes	40.20%	40.20
Sesquiterpenes	8.39%	8.39%
Monoterpenols	44.62%	44.62
Sesquiterpenols		1.08%
Ketones		0.05%
Esters		0.00%
Ethers	4.93%	4.93%
Aldehydes		0.00%
Phenols		0.02%
Other		0.71%

ESSENTIAL VALIDATION SERVICES | 747 SW 2ND AVE GAINESVILLE, FLORIDA 32601 | 317-361-5044

Client

LIVEGOOD

Source

Tea Tree (*Melaleuca alternifolia*)

LGEO281205-002

Total Percentage		99.33%		
Number	RT	Area %	Compound Name	Chemical Family
1	5.76	0.04%	cis-Hex-3-en-1-ol	Aliphatic Alcohol
2	8.08	0.98%	alpha-Thujene	Monoterpene
3	8.34	2.48%	alpha-Pinene	Monoterpene
4	8.95	0.01%	Camphene	Monoterpene
5	9.90	0.11%	Sabinene	Monoterpene
6	10.06	0.75%	beta-Pinene	Monoterpene
7	10.64	0.86%	Myrcene	Monoterpene
8	11.18	0.01%	Pseudolimonene	Monoterpene
9	11.29	0.52%	alpha-Phellandrene	Monoterpene
10	11.79	9.68%	alpha-Terpinene	Monoterpene
11	12.11	2.61%	para-Cymene	Monoterpene
12	12.40	4.93%	1,8-Cineole	Monoterpene Ether
13	13.15	0.01%	(E)-beta-Ocimene	Monoterpene
14	13.69	18.50%	gamma-Terpinene	Monoterpene
15	14.15	0.02%	trans-Sabinene hydrate	Monoterpenol
16	14.86	3.61%	Terpinolene	Monoterpene
17	15.07	0.06%	para-Cymenene	Monoterpene
18	15.57	0.09%	Linalool	Monoterpenol
19	16.61	0.23%	cis-para-Menth-2-en-1-ol	Monoterpenol
20	17.06	0.01%	para-Menthatriene	Monoterpene
21	17.16	0.01%	Terpinen-1-ol	Monoterpenol
22	19.37	40.35%	Terpinen-4-ol	Monoterpenol
23	19.54	0.11%	para-Cymen-8-ol	Monoterpenol
24	19.91	3.63%	alpha-Terpineol	Monoterpenol
25	20.53	0.15%	trans-Piperitol	Monoterpenol
26	21.28	0.01%	Nerol	Monoterpenol
27	22.49	0.05%	Piperitone	Monoterpene Ketone
28	23.42	0.02%	trans-Ascaridol glycol	Monoterpenol
29	25.94	0.26%	delta-Elemene	Sesquiterpene
30	26.60	0.06%	alpha-Cubebene	Sesquiterpene
31	27.58	0.07%	Isoledene	Sesquiterpene
32	27.80	0.17%	alpha-Copaene	Sesquiterpene
33	28.41	0.03%	beta-Elemene	Sesquiterpene
34	28.52	0.02%	Sativene	Sesquiterpene
35	28.95	0.02%	Methyl eugenol	Phenylpropanoid

ESSENTIAL VALIDATION SERVICES | 747 SW 2ND AVE GAINESVILLE, FLORIDA 32601 | 317-361-5044

Client

LIVEGOOD

Source



Tea Tree (*Melaleuca alternifolia*)
LGE0281205-002

Number	RT	Area %	Compound Name	Chemical Family
36	29.098	0.38%	alpha-Gurjunene	Phenylpropanoid
37	29.57	0.42%	beta-Caryophyllene	Sesquiterpene
38	29.90	0.07%	Longifolene	Sesquiterpene
39	30.17	0.07%	beta-Gurjunene	Sesquiterpene
40	30.37	1.33%	Aromadendrene	Sesquiterpene
41	30.66	0.15%	alpha-Guaiene	Sesquiterpene
42	30.81	0.15%	trans-Muurola-3,5-diene	Sesquiterpene
43	31.05	0.12%	alpha-Humulene	Sesquiterpene
44	31.24	0.57%	allo-Aromadendrene	Sesquiterpene
45	31.78	0.40%	trans-Cadina-1(6),4-diene	Sesquiterpene
46	31.90	0.04%	gamma-Muurolole	Sesquiterpene
47	32.41	0.35%	alpha-Selinene	Sesquiterpene
48	32.54	1.15%	Viridiflorene	Sesquiterpene
49	32.70	0.59%	Bicyclogermacrene	Sesquiterpene
50	32.88	0.15%	alpha-Muurolole	Sesquiterpene
51	32.99	0.05%	beta-Vetispirene	Sesquiterpene
52	33.42	0.02%	gamma-Cadinene	Sesquiterpene
53	33.67	1.18%	delta-Cadinene	Sesquiterpene
54	33.81	0.39%	Zonarene	Sesquiterpene
55	33.99	0.01%	delta-Guaiene	Sesquiterpene
56	34.19	0.19%	trans-Cadina-1,4-diene	Sesquiterpene
57	35.29	0.09%	Maaliol	Sesquiterpenol
58	35.58	0.07%	Palustrol	Sesquiterpenol
59	35.85	0.06%	Spathulenol	Sesquiterpenol
60	36.19	0.25%	Globulol	Sesquiterpenol
61	36.30	0.03%	Gleenol	Sesquiterpenol
62	36.51	0.15%	Viridiflorol	Sesquiterpenol
63	36.90	0.03%	Ledol	Sesquiterpenol
64	37.65	0.11%	Rosifoliol	Sesquiterpenol
65	37.81	0.17%	1,10-di-epi-Cubenol	Sesquiterpenol
66	38.00	0.04%	Isospathulenol	Sesquiterpenol
67	38.36	0.07%	1-epi-Cubenol	Sesquiterpenol
68	38.52	0.01%	alpha-Muurolol	Sesquiterpenol
			Limonene	

ESSENTIAL VALIDATION SERVICES | 747 SW 2ND AVE GAINESVILLE, FLORIDA 32601 | 317-361-5044

